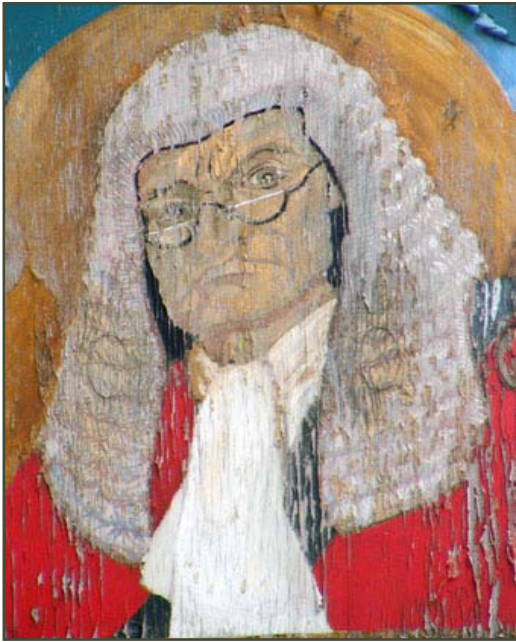


# TREASURE DAYS

## PREVIEW PAGES: FROM THE EASY HUNT..



34. Which sculptor worked in Thomas More's orchard from 1909-14?

35. Which wizard's name can you see along here?

36. What does the mosaic on the left of the Old Dairy depict?



# TREASURE DAYS

## FROM THE CRYPTIC HUNT..



29. Could this novelist have been a bull in a China Shop?

30. Do they use margarine rather than butter in the pub grub here?

Turn right back onto CHEYNE WALK

31. Who were Eliza Cadogan and Sarah Stanley?

